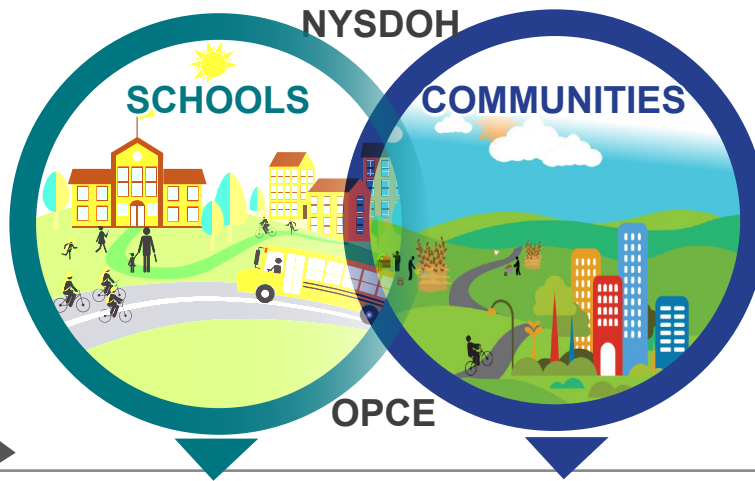




# Creating Healthy Schools and Communities

## 1 INITIATIVE

**Creating Healthy Schools and Communities (CHSC)** is a five-year (2015-2020) public health initiative to reduce major risk factors of obesity, diabetes, and other chronic diseases in 85 high-need school districts and associated communities statewide. The **New York State Department of Health (NYSDOH)** has funded local organizations and county health departments. The goal is to implement multi-component evidence-based policies, place-based strategies, and promising practices to increase demand for and access to healthy, affordable foods and opportunities for daily physical activity for all New Yorkers. The **Obesity Prevention Center for Excellence (OPCE)**, led by **JSI Research & Training Institute, Inc. (JSI)** strengthens the CHSC Initiative's collective impact by providing technical assistance, training, resources, and a network to collaborate.



## 7 STRATEGIES

1. Revise, implement, and assess **local wellness policies** to improve the school environment.
2. Establish **Comprehensive School Physical Activity Programs (CSPAP)**.
3. Increase access to **healthy, affordable foods** and increase school districts' ability to meet federal **nutrition standards** for foods sold outside of school meals.
4. Restrict **food marketing** to children.
5. Increase access to **healthy, affordable foods** in communities.
6. Increase adoption and use of **food standards and procurement policies that increase healthy foods** in community sites and settings.
7. Adopt and implement Complete Streets policies, plans, and practices to increase access to **opportunities to walk, bike, and roll**.

## 26 GRANTEES

Chautauqua County Health Network, Inc.  
 Cornell Cooperative Extension of Niagara  
 Erie 1 Board of Cooperative Educational Services  
 Finger Lakes Health Systems Agency  
 Genesee-Livingston-Steuben-Wyoming BOCES\*

With grant funding, JSI<sup>^</sup> and its partners (Alliance for a Healthier Generation, PedNet, University of Rochester, and Sasaki Associates) support the 25 grantees and their partners in CHSC efforts.  
 Visit OPCE online at: [www.nyopce.com](http://www.nyopce.com)



Fund for Public Health in New York, Inc.\*  
 The Institute for Family Health

\*Organization has multiple grants  
<sup>^</sup> JSI is one of the 26 grantees